



LOCAL, SUSTAINABLE, DELICIOUS

1

GEARING UP FOR THE SEA...



MAINTENANCE



FUEL



GEAR



BAIT

ROSE'S OIL

GLOUCESTER MARINE RAILWAY'S

FELICAROL

CAPE ANN OIL

B AND N FISHING GEAR

FISHERMAN'S OUTFITTER

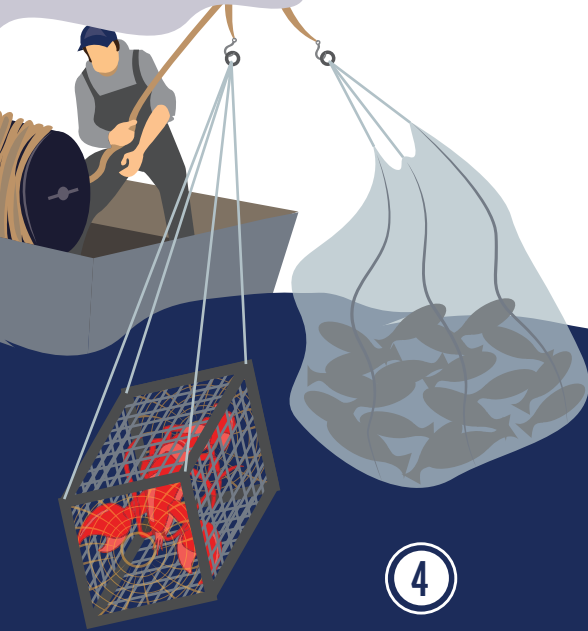
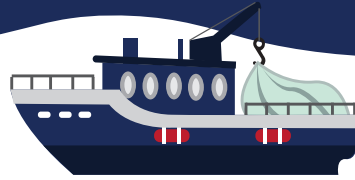
THREE LANTERN FISHING SUPPLIES

SEATRONICS

2

OUR FISHERMAN OUT AT SEA...

FISHERMAN BOAT, CAPTAIN & CREW



3

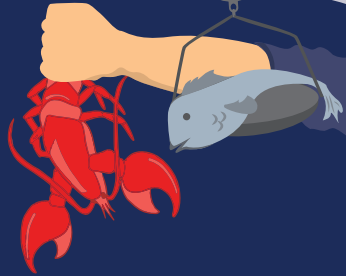
...FISHERMAN TO DEALERS/SUPPLIERS



SPECIES OF FISH

BASS
TUNA
FLOUNDER
HADDOCK

POLLOCK
MONKFISH
COD



4

YOUR PLATE



OUR SPONSORS

CITY OF GLOUCESTER

GLOUCESTER EDIC AND
COMMONWEALTH OF MASSACHUSETTS



innovate
gloucester **ig**

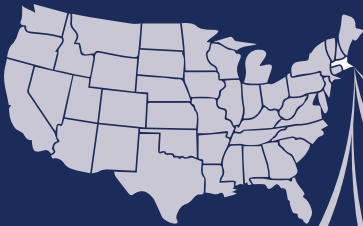


GLOUCESTER LANDINGS
4,148,482 LBS.

ACTIVE PERMITS
189

EX VESSEL VALUE
\$21,147,773.00

ECONOMIC IMPACT & TOTAL NUMBER OF JOBS CREATED



35 BOATS LANDING IN GLOUCESTER
UNLOADED ABOUT 17 MILLION POUNDS OF
GROUND FISH.



FROM FISHERMEN TO CREW TO PROCESSORS
TO RESTAURANTS, THE SEAFOOD INDUSTRY
SUPPORTS 1.7 MILLION JOBS AND GENERATE
\$200 BILLION IN ANNUAL SALES NATIONWIDE.



ANNUAL RECREATIONAL BOATING IN MASS
GENERATES \$870 MILLION IN REVENUE WITH
A TOTAL ANNUAL ECONOMIC IMPACT OF \$2
BILLION.



MASS IS THE
SECOND-HIGHEST EARNING
FISHERY, BRINGING IN \$647.2
MILLION IN 2018

GLOUCESTERFRESH.COM